

A scenic photograph of an Arctic landscape. In the foreground, three reindeer with large, dark antlers are walking across a field of dry, brownish grass. The background features a range of blue mountains under a clear sky. The text is overlaid on the image in white and black.

Arctic Boreal Vulnerability Experiment (ABoVE) 2024 ABoVE L-band SAR Airborne Flights

**23 August 2024 (DOY 236)
SW Alaska & Yukon Delta**

**Charles Miller, Deputy Science Lead
Jet Propulsion Laboratory, California Institute of Technology
Peter Griffith, Elizabeth Hoy
Carbon Cycle & Ecosystems Office
and the ABoVE Science Team**

**For Ryan Pavlick, Kathy Hibbard, Laura Lorenzoni, Bruce Tagg, Jack Kaye
NASA HQ
2024**



23 August 2024/DOY 236 SW Alaska & Yukon Delta



Daily Summary:

- **C-20A (N802NA) L-band SAR ABoVE CAMPAIGN (CANADA / ALASKA)**
- REPORT DATE: 23 August 2024
- Current Status of Aircraft: **GREEN**
- Current Status of SAR: **GREEN**
- Current Status of PPA: **GREEN**
- Current Deployment Location: Fairbanks, AK (PAFA)
- Crew: Nelson, Little, Reid, Griffith, Austerberry, Bachman-Okihiro, Tzortziou, Clark, Mannino, Nicholas
- Science Coordinator: N Pinto
- Science Lead: C Miller
- Project Manager: Y Lou



23 August 2024/DOY 236 SW Alaska & Yukon Delta



Daily Summary:

- Fairbanks (PAFA) - Fairbanks (PAFA)
- Collected 8 of 8 data lines
- Flight Plan – Flight Plan 2128_v01
- Essentially no fire smoke
- Light rain throughout domain
- FORTE leadership team fly Yukon Delta

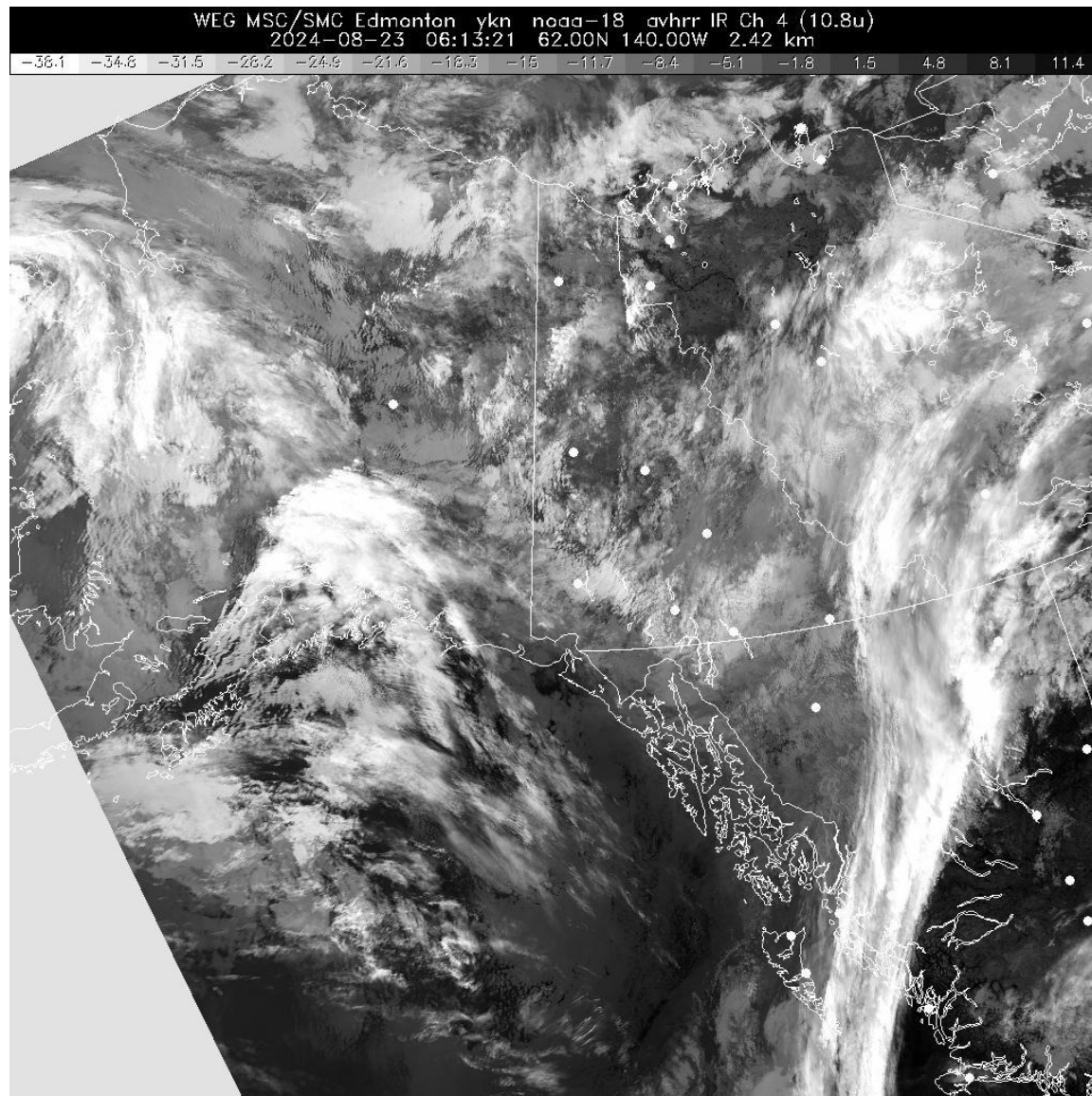
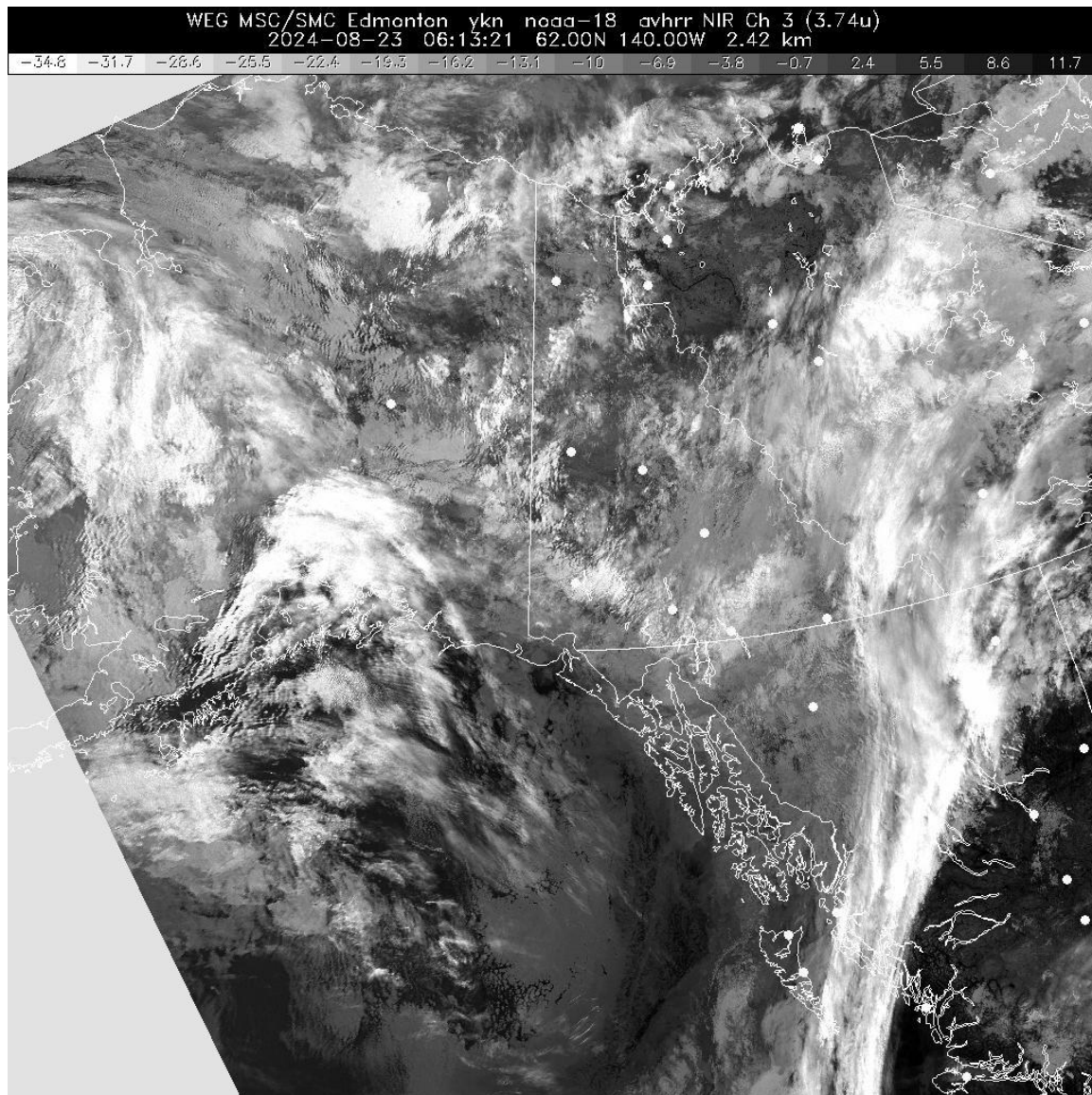


23 August 2024/DOY 236 SW Alaska & Yukon Delta





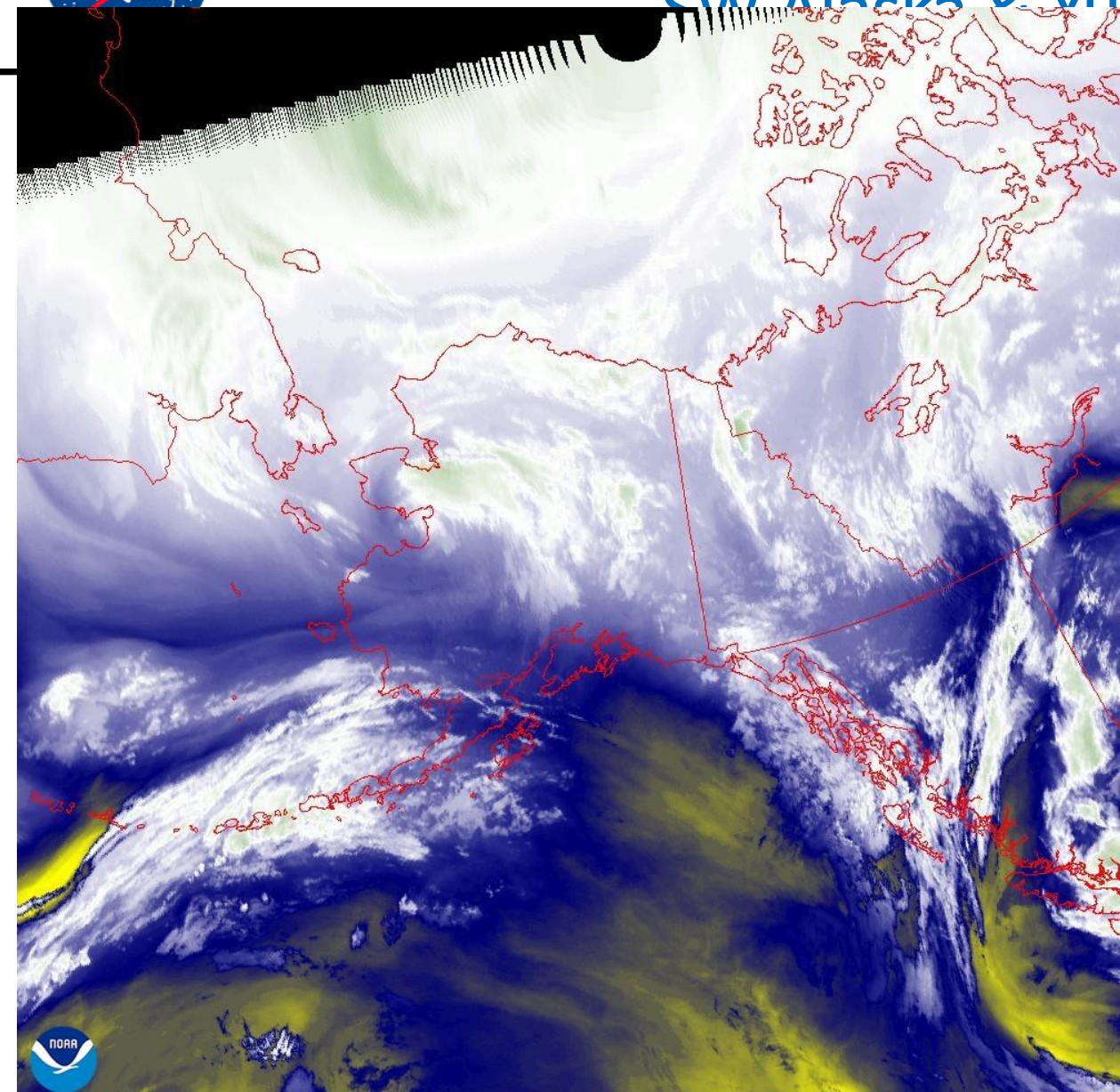
23 August 2024/DOY 236 SW Alaska & Yukon Delta



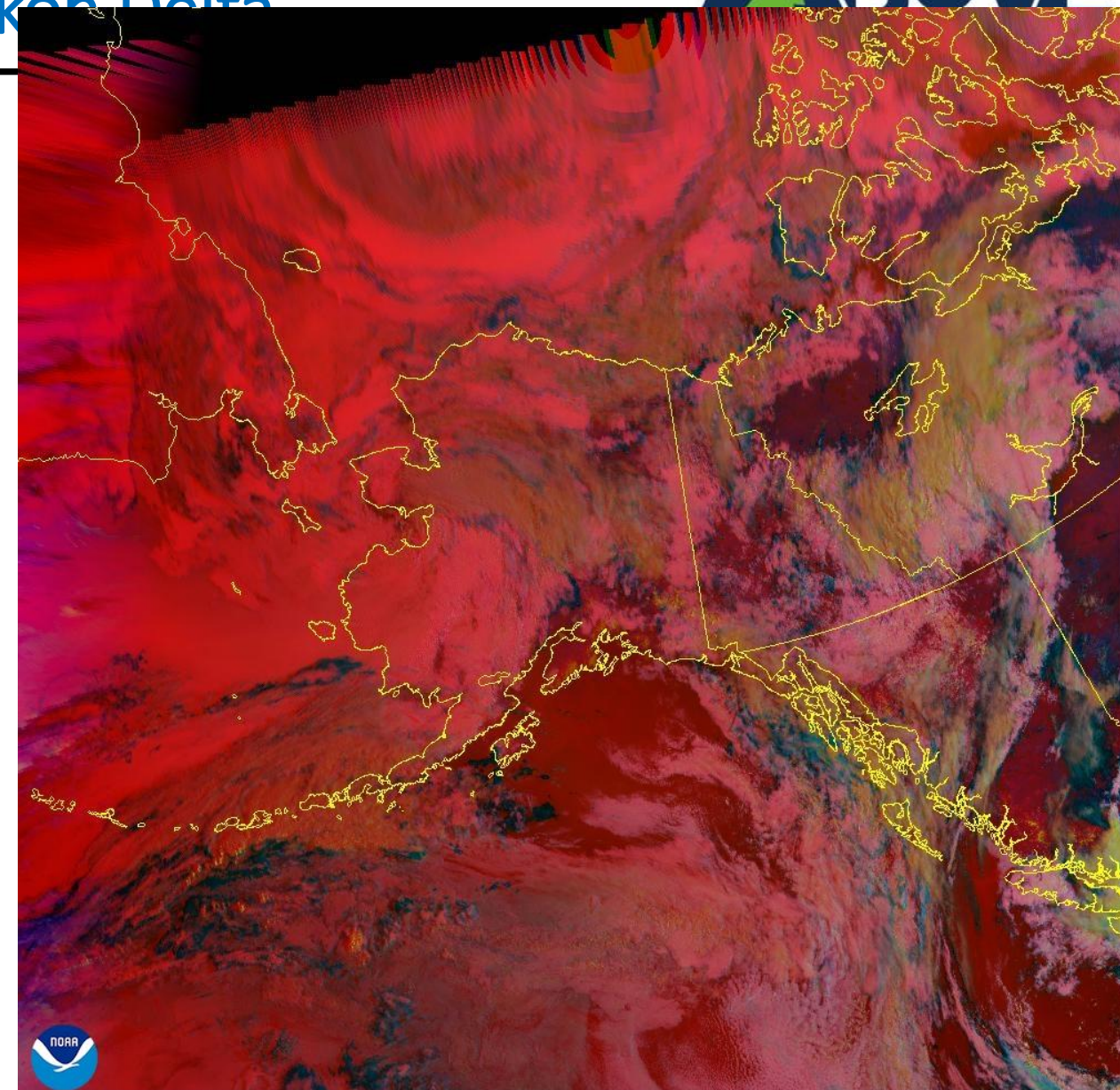


23 August 2024/DOY 236

SW Alaska & Yukon Delta



23 Aug 2024 17:20Z - NOAA/NESDIS/STAR - GOES-West - Band 10 - AK



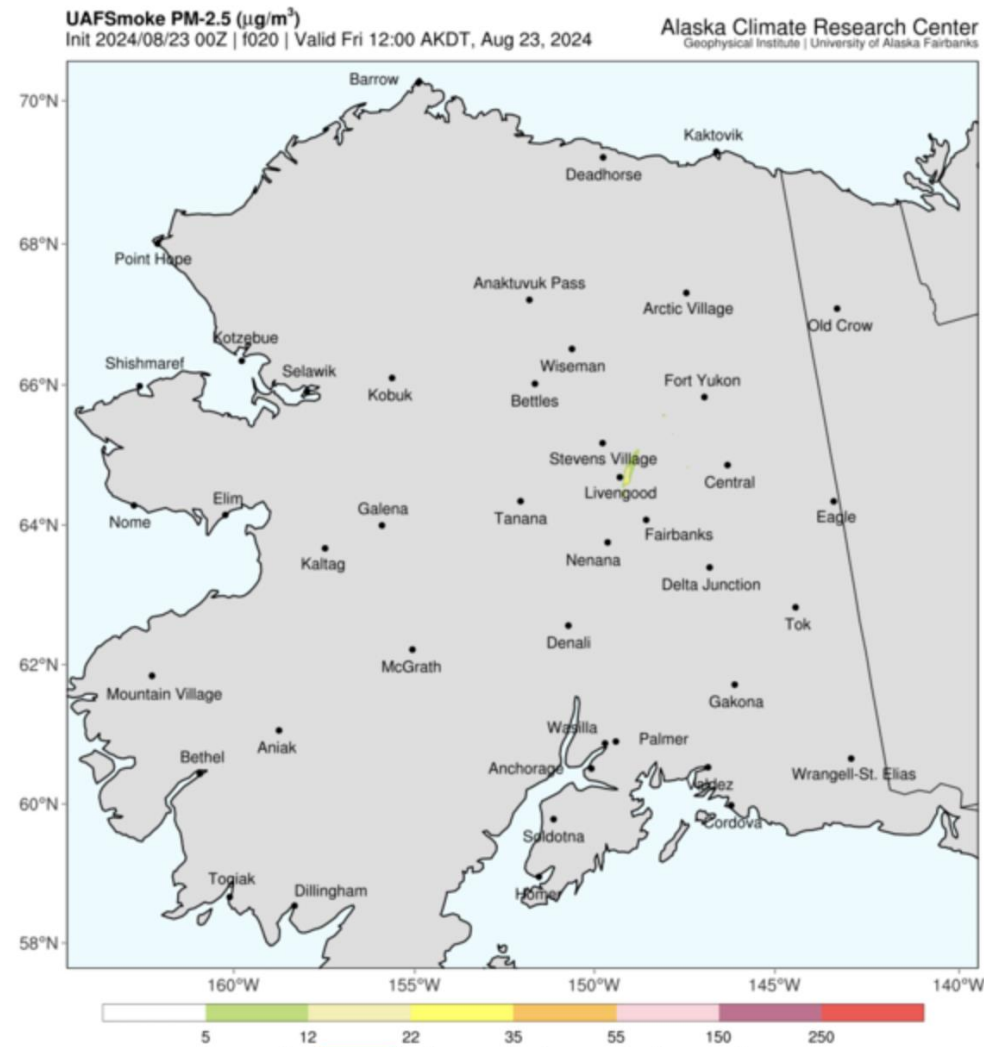
23 Aug 2024 17:10Z - NOAA/NESDIS/STAR - GOES-West - DayNightCloudMicroCombo Composite - AK



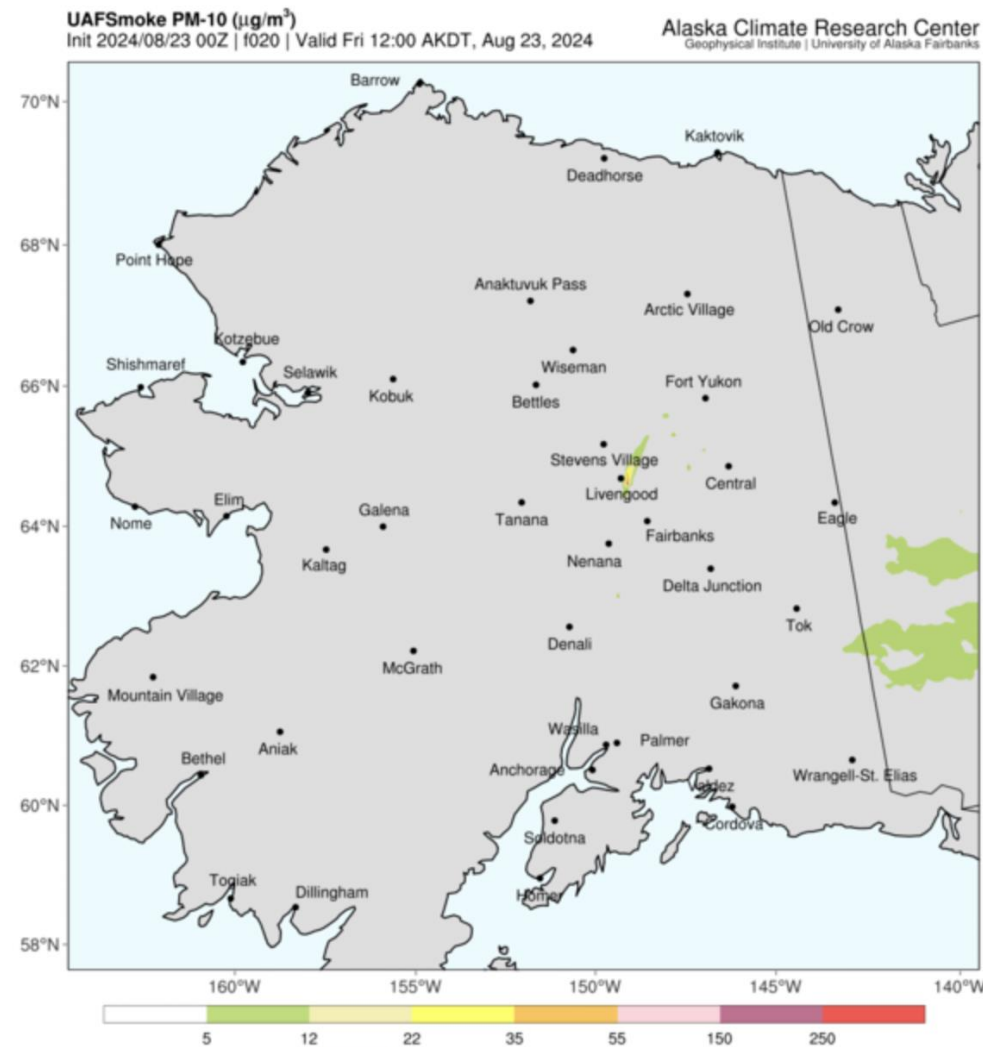
23 August 2024/DOY 236 SW Alaska & Yukon Delta



PM-2.5: Particulate Matter (smoke particles 2.5 micrometers or less in diameter) near surface level.
(Loading slowly? [Click here](#) for a simpler animation.)



PM-10: Particulate Matter (smoke particles 10 micrometers or less in diameter) near surface level.
(Loading slowly? [Click here](#) for a simpler animation.)





23 August 2024/DOY 236 SW Alaska & Yukon Delta



Flight Plan Report: PLAN_2128_v01

https://uavsar.jpl.nasa.gov/cgi-bin/report.pl?planID=PLAN_2128_v01#summary

Data Acquisitions:

Line 1: Iclark_19205

Line 2: katmaA_23004

Line 3: katmaC_02112

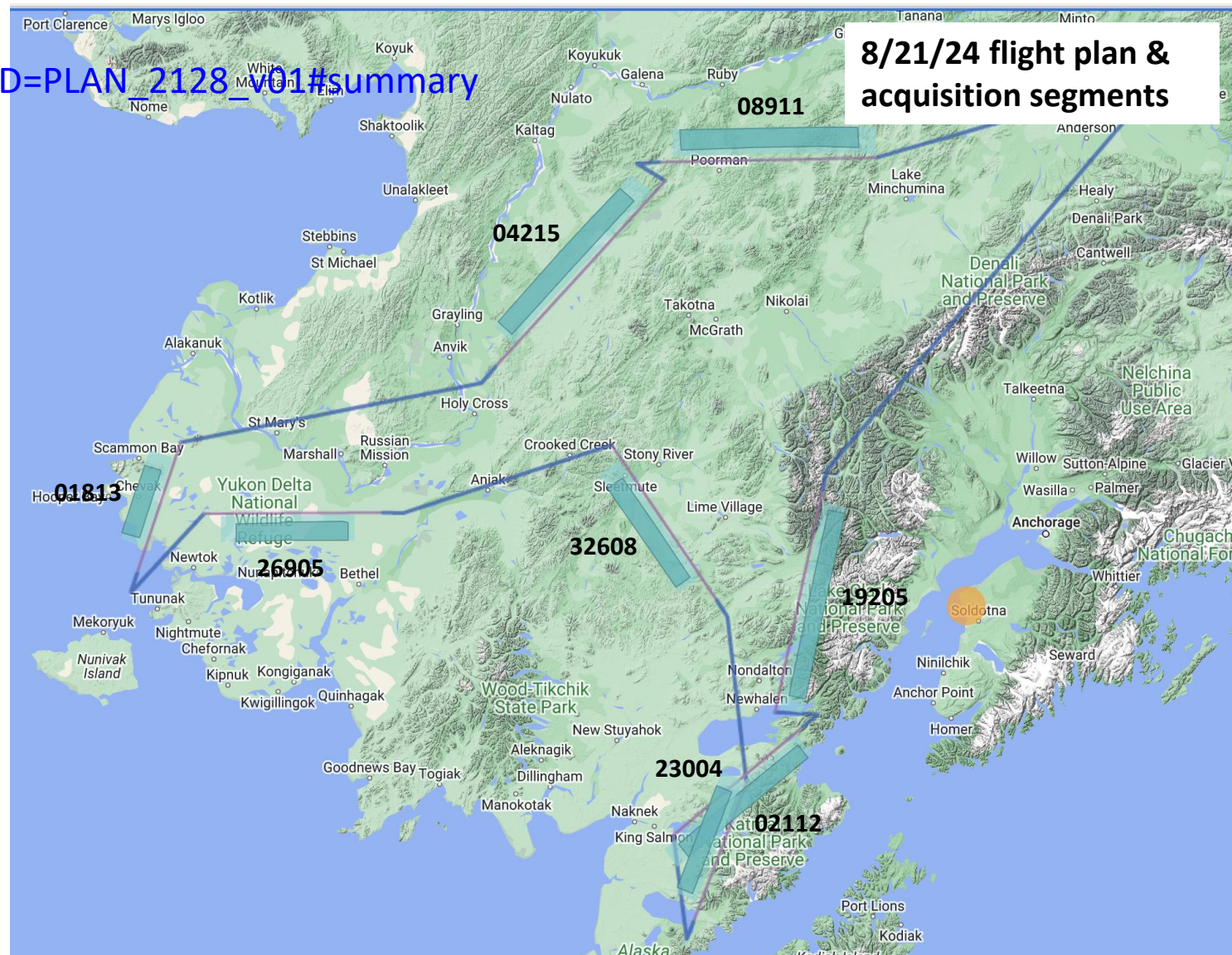
Line 4: sriver_32608

Line 5: ykdelA_26905

Line 6: chevak_01813

Line 7: innoko_04215

Line 8: poorma_08911





23 August 2024/DOY 236 SW Alaska & Yukon Delta

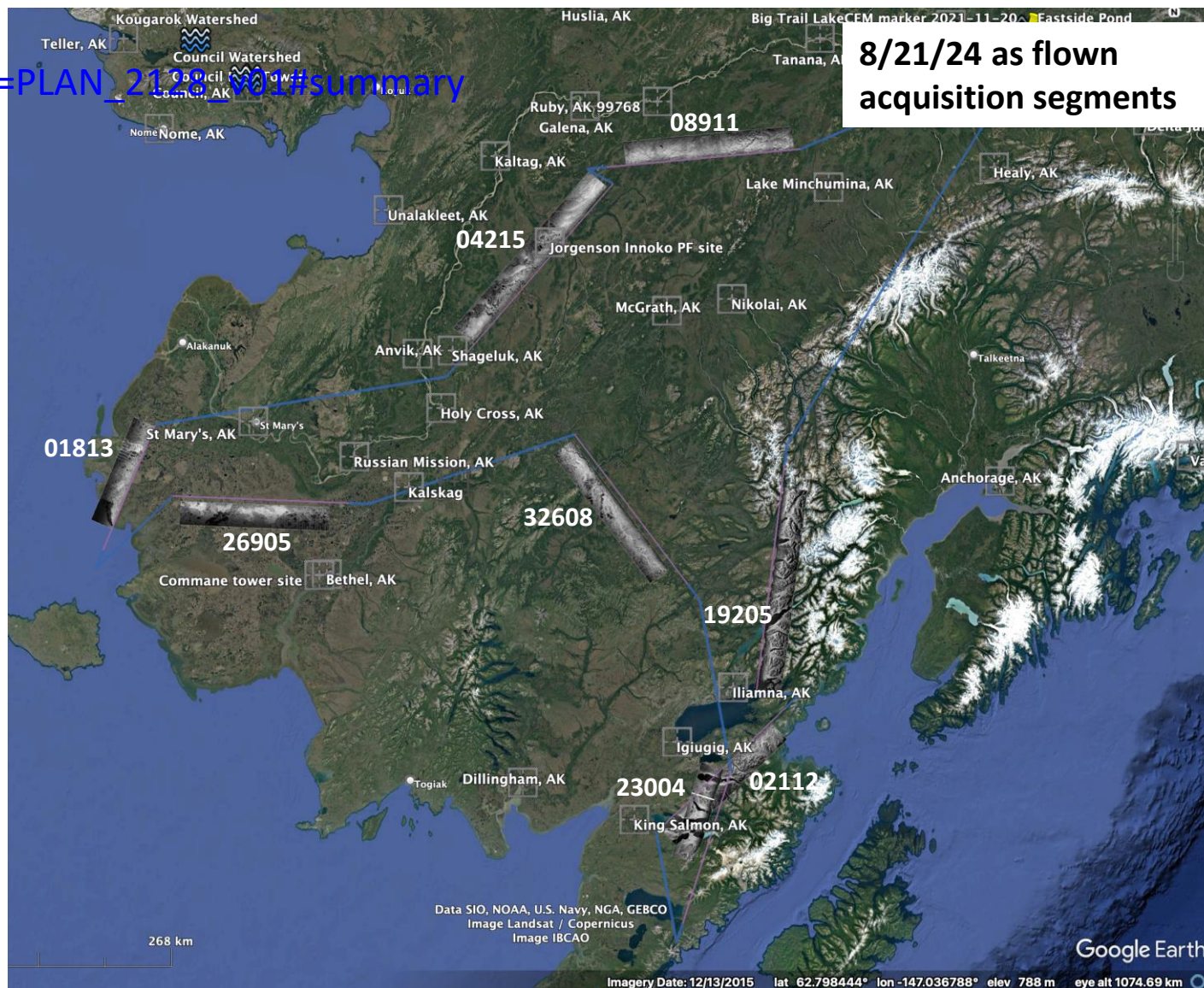


Flight Plan Report: PLAN_2128_v01

https://uavsar.jpl.nasa.gov/cgi-bin/report.pl?planID=PLAN_2128_v01#summary

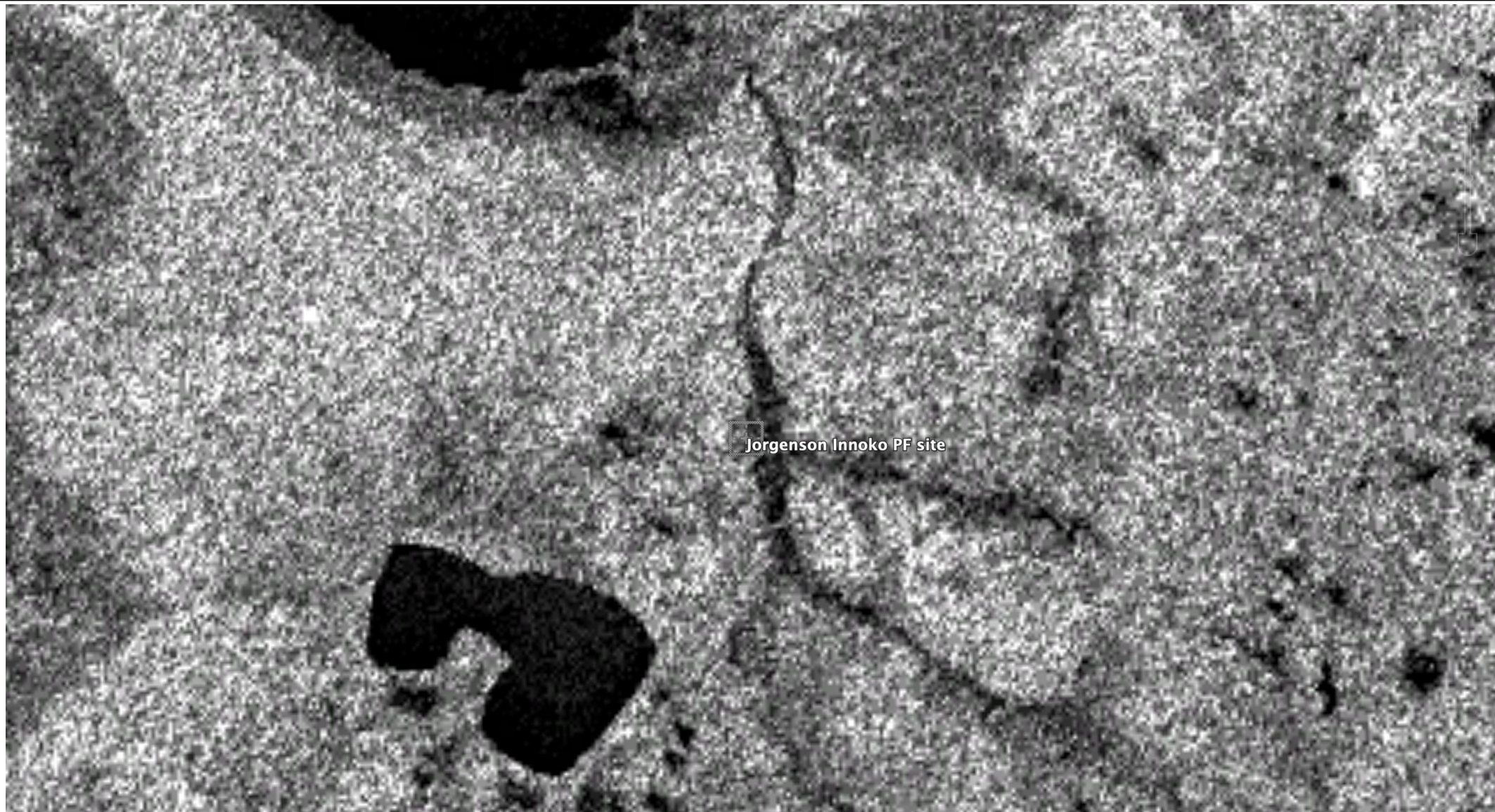
Data Acquisitions:

- Line 1: lclark_19205
- Line 2: katmaA_23004
- Line 3: katmaC_02112
- Line 4: sriver_32608
- Line 5: ykdelA_26905
- Line 6: chevak_01813
- Line 7: innoko_04215
- Line 8: poorma_08911





23 August 2024/DOY 236 SW Alaska & Yukon Delta





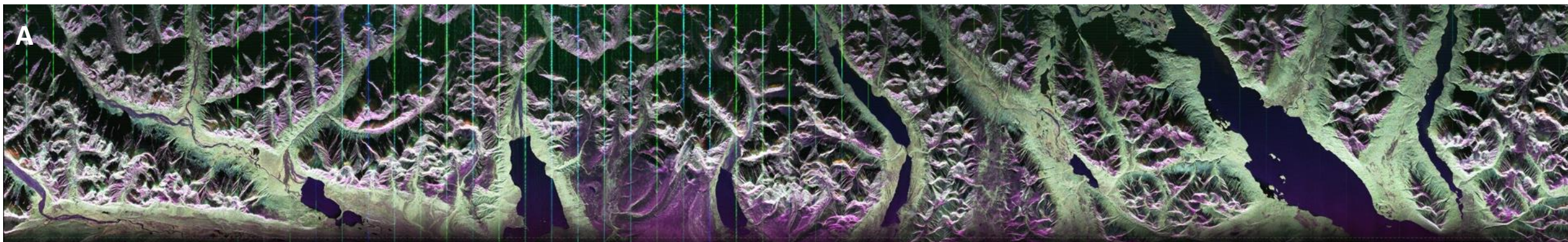
23 August 2024/DOY 236 SW Alaska & Yukon Delta



UAVSAR Quick-look products

- A. Line 1: lclark_19205
- B. Line 2: katmaA_23004

Brian Bachman, JPL





23 August 2024/DOY 236 SW Alaska & Yukon Delta

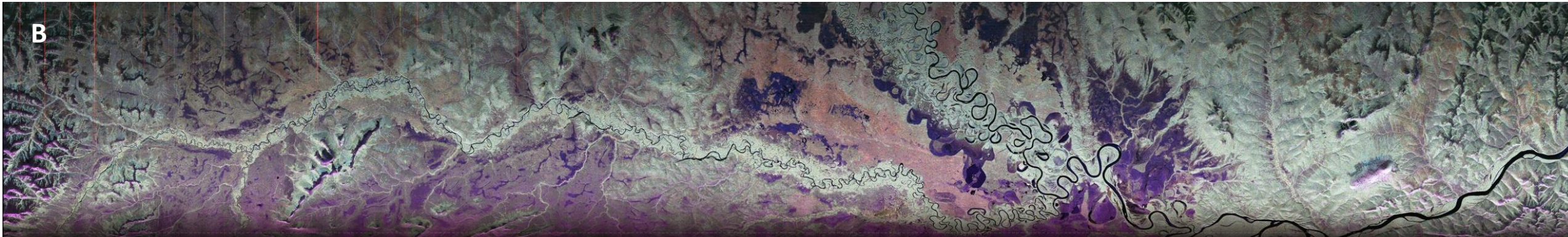
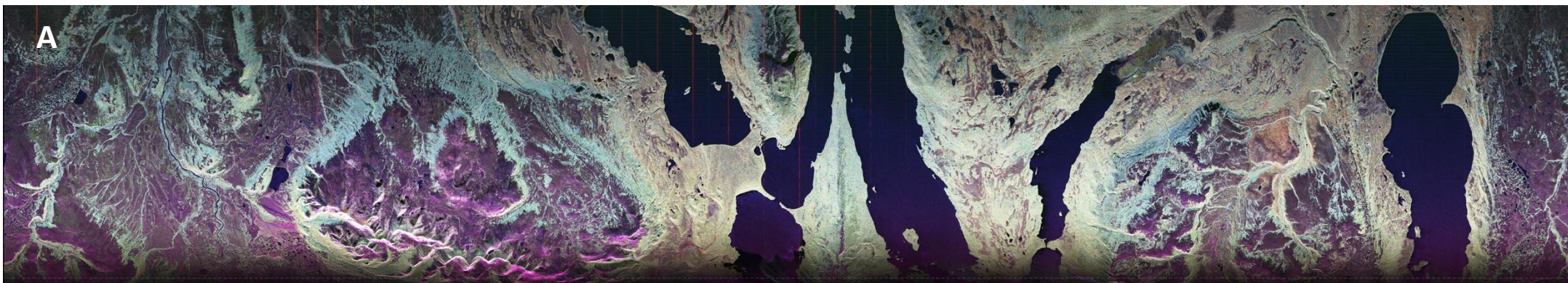


UAVSAR Quick-look products

A. Line 3: katmaC_02112

B. Line 4: sriver_32608

Brian Bachman, JPL





23 August 2024/DOY 236 SW Alaska & Yukon Delta

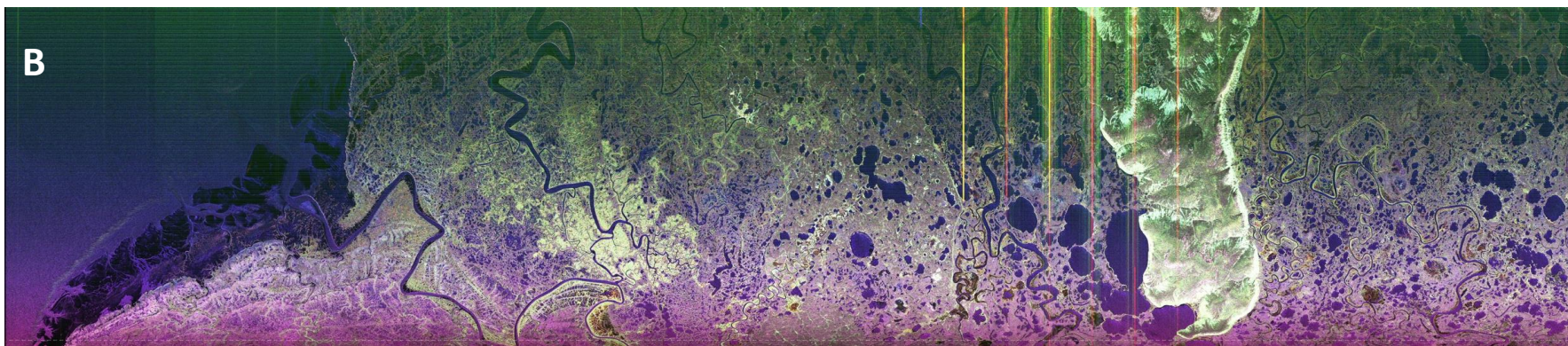
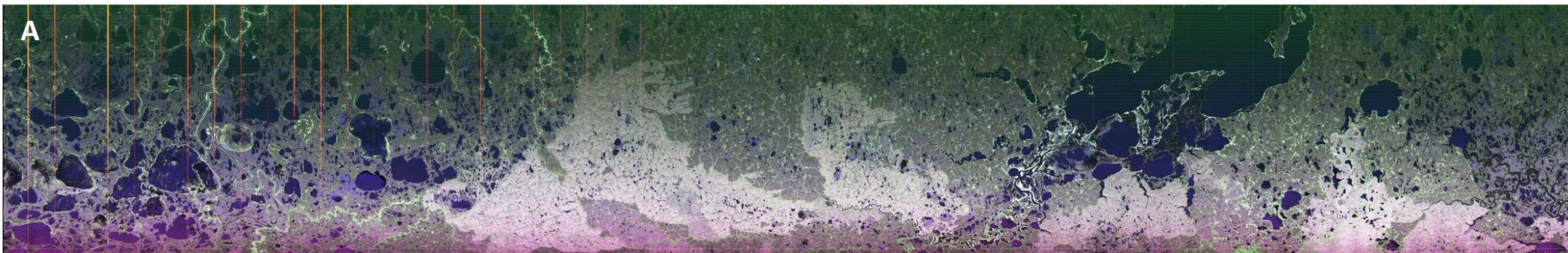


UAVSAR Quick-look products

A. Line 5: ykdelA_26905

B. Line 6: chevak_01813

Brian Bachman, JPL





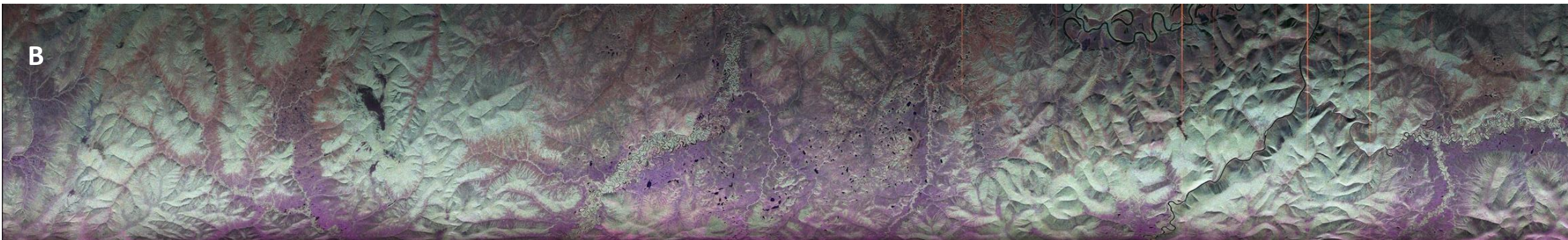
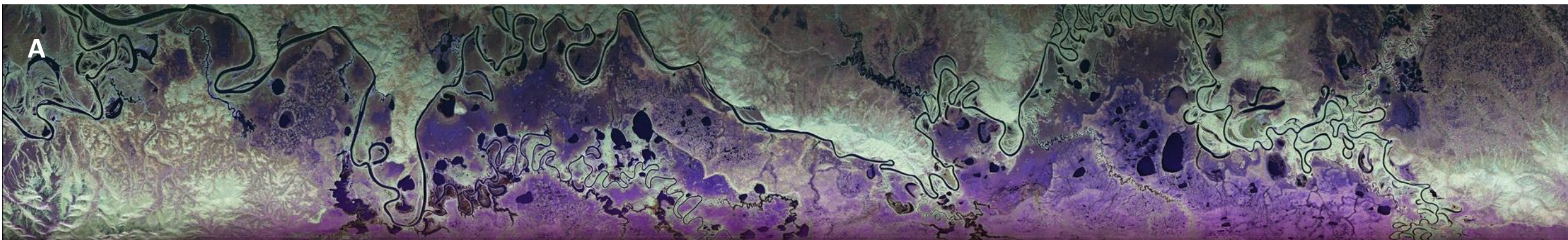
23 August 2024/DOY 236 SW Alaska & Yukon Delta



UAVSAR Quick-look products

- A. Line 7: innoko_04215
- B. Line 8: poorma_08911

Brian Bachman, JPL





23 August 2024/DOY 236
SW Alaska & Yukon Delta



BACKUP



23 August 2024/DOY 236 SW Alaska & Yukon Delta



Wilder Runway (PAKX) UTC:17:41 Local:09:41

METAR PAKX 231735Z AUTO 19003KT 10SM BKN017 OVC022 07/06 A2992 RMK AO2

Wilder (NE) 17:38 08/23/24 (UTC) 09:38 08/23/24 (AKDT)

CLEARDAY VISUAL REFERENCE

4275' MSL 14.0 SM
5975' MSL 29.0 SM
6100' MSL 17.0 SM

Site Elevation: 309' MSL

FAA advisory weather product

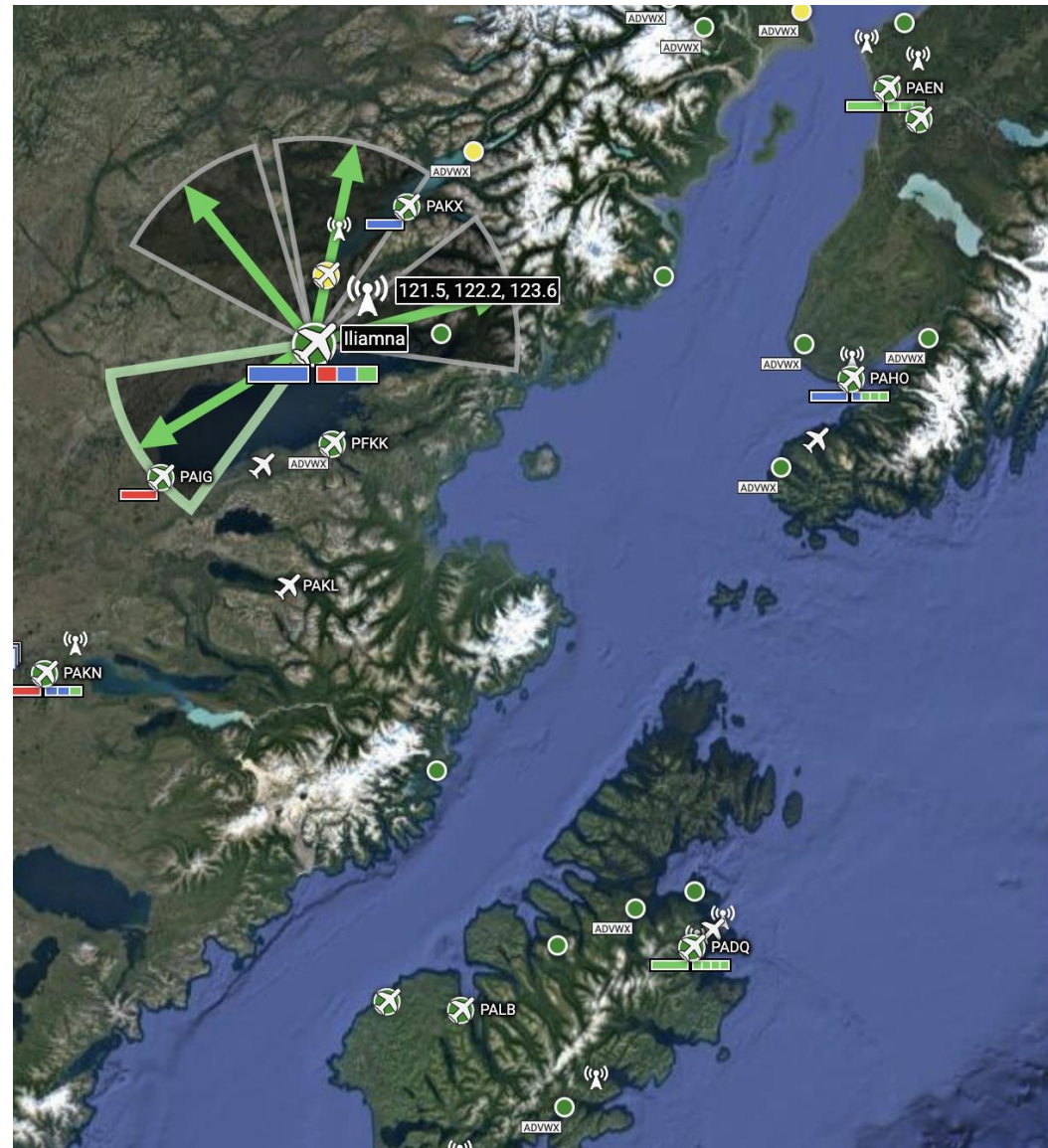
Show Camera Loop

NorthEast (40°)	East (95°)	SouthEast (150°)	West (250°)

Weather Data | Weather Trends | PIREPs | RCO | Airport Info | NOTAMS (PilotWeb)

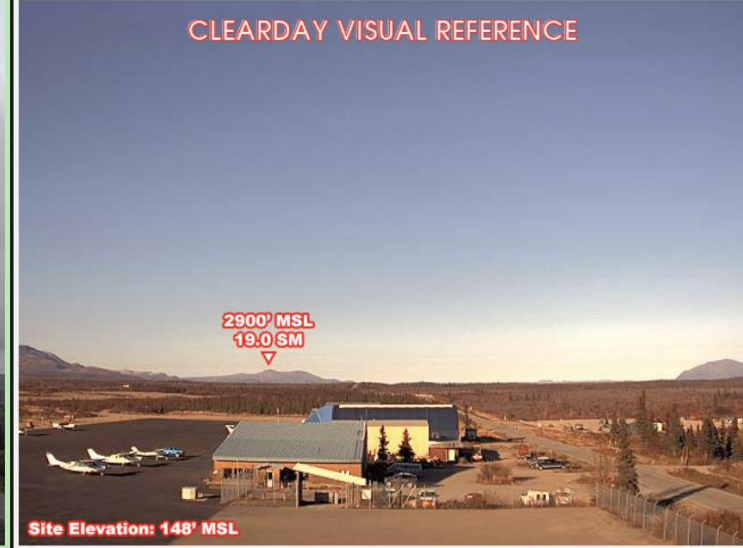


23 August 2024/DOY 236 SW Alaska & Yukon Delta

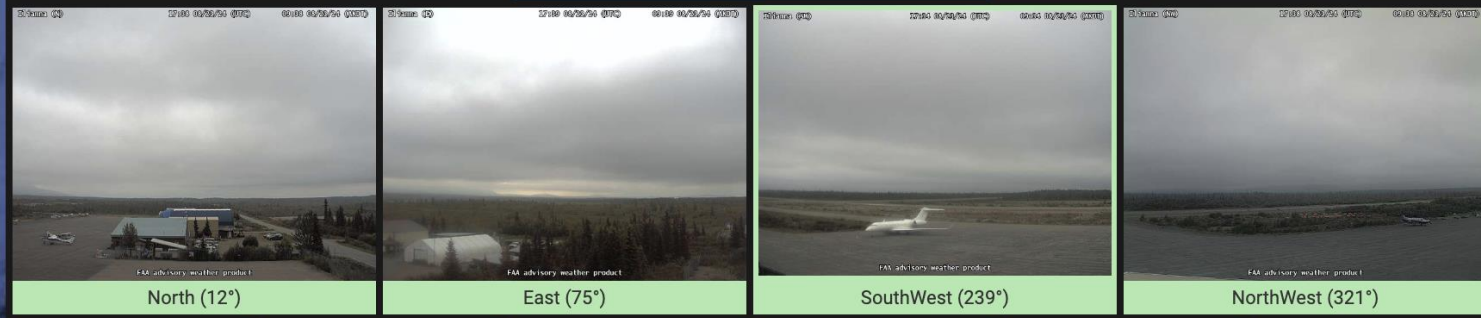


Iliamna (PAIL) UTC:17:41 Local:09:41

METAR PAIL 231700Z 24007KT 10SM OVC010 09/07 A2996 RMK AO2 CIG 008V013 T00890072



Show Camera Loop



Weather Data Weather Trends PIREPs RCO Airport Info NOTAMs (PilotWeb)



23 August 2024/DOY 236 SW Alaska & Yukon Delta



Igiugig (PAIG) UTC:17:41 Local:09:41

METAR PAIG 231656Z AUTO 23008KT 10SM OVC007 09/08 A2997 RMK AO2 SLP156 T00890083

Igiugig (N) 17:49 08/23/24 (UTC) 09:49 08/23/24 (AKDT)

CLEARDAY VISUAL REFERENCE

2100' MSL
33.0 SM

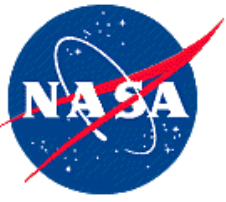
Site Elevation: 76' MSL

FAA advisory weather product

Show Camera Loop

North (350°)	East (90°)	South (200°)	

Weather Data **Weather Trends** **PIREPs** **RCO** **Airport Info** **NOTAMs (PilotWeb)**



23 August 2024/DOY 236 SW Alaska & Yukon Delta



King Salmon (PAKN) UTC:17:41 Local:09:41

METAR PAKN 231736Z 22007KT 10SM SCT005 BKN022 BKN055 11/09 A2996 RMK AO2 T01060094

King Salmon (N) 17:17 08/23/24 (UTC) 09:17 08/23/24 (AKDT)

CLEARDAY VISUAL REFERENCE

Buildings Less than 1.0 SM

End of Runway Less than 1.0 SM

Site Elevation: 53' MSL

FAA advisory weather product

Show Camera Loop

North (3°)	East (108°)	South (179°)	

Weather Data | Weather Trends | PIREPs | RCO | Airport Info | NOTAMS (PilotWeb)



23 August 2024/DOY 236 SW Alaska & Yukon Delta



Bethel (PABE) UTC:17:43 Local:09:43

METAR PABE 231730Z 23015KT 3SM -RA BR FEW008 BKN011 OVC017 07/07 A2988 RMK AO2 P0000 T00720072

Bethel (AK) 17:21 08/23/24 (UTC) 09:21 08/23/24 (AKDT)

CLEARDAY VISUAL REFERENCE

End of Runway 1.5 SM

Site Elevation: 126' MSL

FAA advisory weather product

Show Camera Loop

North (20°)	There is no current image available for this camera. Images greater than 60 minutes old are not displayed.	SouthWest (210°)	West (275°)		
Weather Data	Weather Trends	PIREPs	RCO	Airport Info	NOTAMs (PilotWeb)



23 August 2024/DOY 236 SW Alaska & Yukon Delta



Newtok (WWT) UTC:17:43 Local:09:43

Newtok (NE) 17:37 08/23/24 (UTC) 09:37 08/23/24 (AKDT)

CLEARDAY VISUAL REFERENCE

FAA advisory weather product

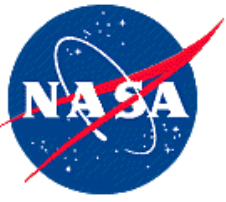
Site Elevation: 13' MSL

No annotatable features

Show Camera Loop

NorthEast (29°)	East (95°)	South (190°)	SouthWest (236°)

Weather Data **Weather Trends** **PIREPs** **RCO** **Site Info** **NOTAMs (PilotWeb)**



23 August 2024/DOY 236 SW Alaska & Yukon Delta



Chevak (PAVA) UTC:17:43 Local:09:43

METAR PAVA 231711Z AUTO 27017KT 8SM FEW010 OVC018 07/06 A2981 RMK AO2 RAE10 PNO \$

Chevak (N) 17:43 08/23/24 (UTC) 09:43 08/23/24 (AKDT)

FAA advisory weather product

CLEARDAY VISUAL REFERENCE

1500' MSL 14.5 SM 1500' MSL 19.0 SM 1400' MSL 17.0 SM

Site Elevation: 71' MSL

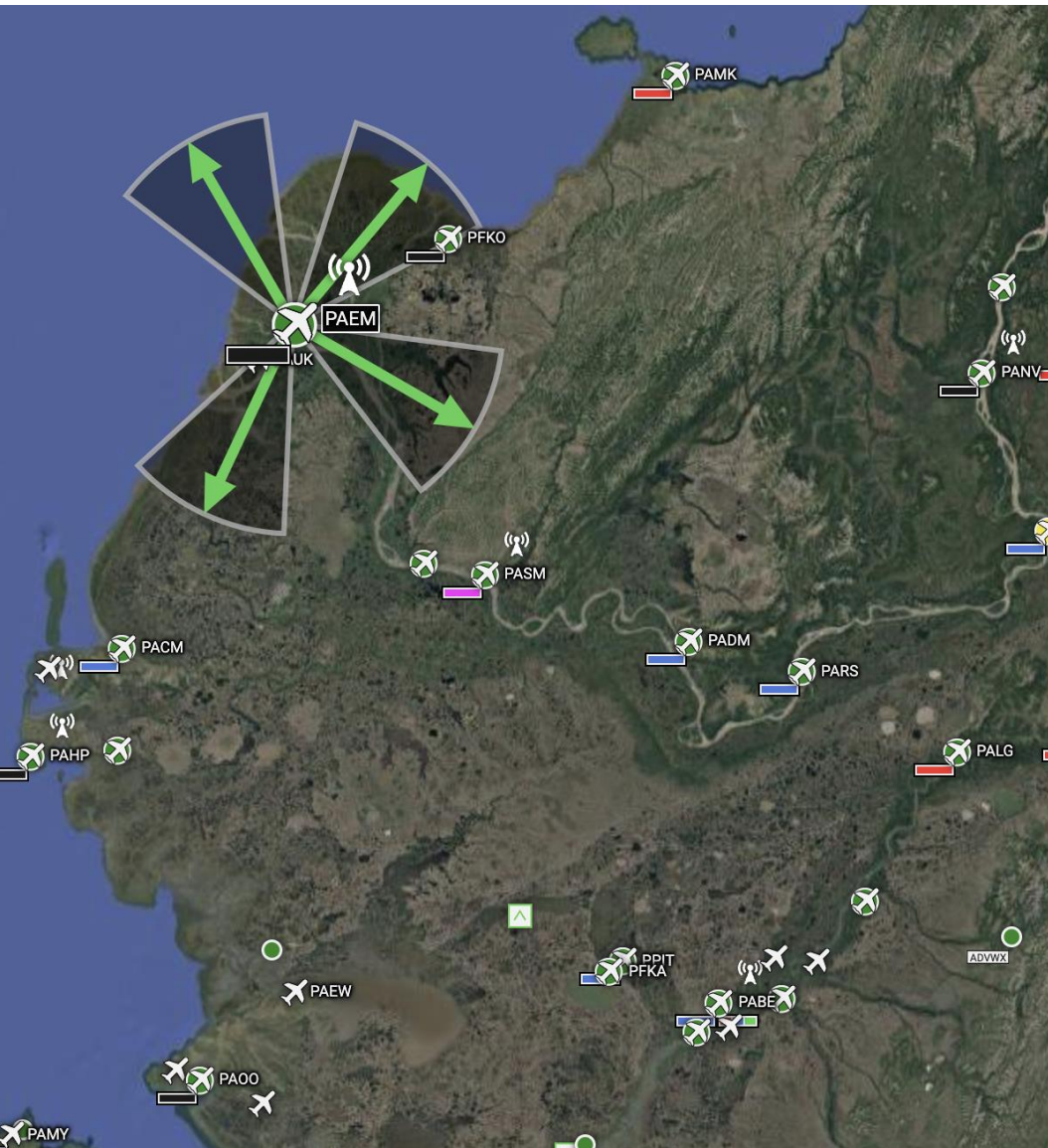
Show Camera Loop

North (10°) SouthEast (115°) South (190°)

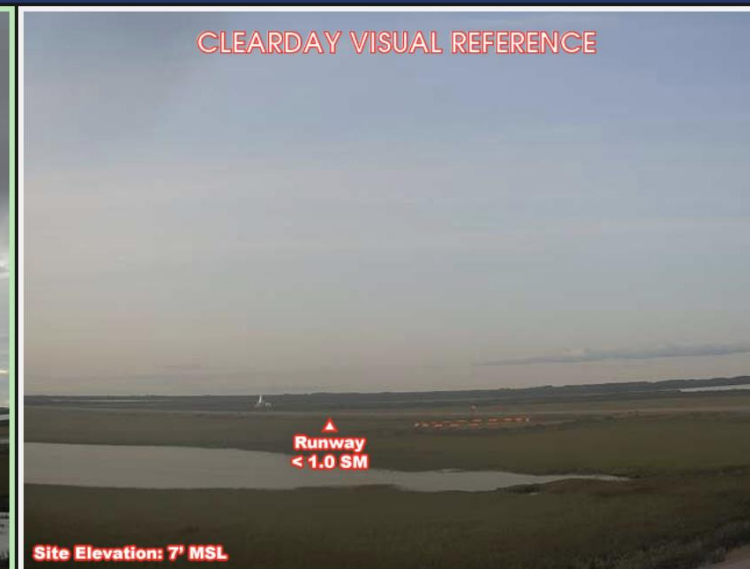
Weather Data Weather Trends PIREPs RCO Airport Info NOTAMs (PilotWeb)



23 August 2024/DOY 236 SW Alaska & Yukon Delta



Emmonak (PAEM) UTC:17:43 Local:09:43



Show Camera Loop

<p>NorthEast (40°)</p>	<p>SouthEast (120°)</p>	<p>SouthWest (205°)</p>	
------------------------	-------------------------	-------------------------	--

Weather Data Weather Trends PIREPs RCO Airport Info NOTAMs (PilotWeb)



23 August 2024/DOY 236 SW Alaska & Yukon Delta



Map showing the location of Shageluk (PAHX) and surrounding weather stations (PAUN, PAMH, PAIN, PAMC, PANV, PAHC, PACJ, PASL, PARS, PALG, PANI, PASV, PATM, ADVWX, PABE) in the SW Alaska & Yukon Delta region.

Shageluk (PAHX)

UTC:17:43 Local:09:43

METAR PAHX 231702Z AUTO 22010KT 10SM BKN008 OVC023 08/08 A2979 RMK A02 SLP088 T00830078

Shageluk (N) 17:41 08/23/24 (UTC) 09:41 08/23/24 (AKDT)

CLEARDAY VISUAL REFERENCE

End of runway
Less than 1.0 SM

Site Elevation: 66' MSL

FAA advisory weather product

Show Camera Loop

 North (344°)	 East (70°)	 South (160°)	
------------------	----------------	------------------	--

Weather Data | Weather Trends | PIREPs | RCO | Airport Info | NOTAMs (PilotWeb)



23 August 2024/DOY 236 SW Alaska & Yukon Delta



Kaltag (PAKV) UTC:17:43 Local:09:43

METAR PAKV 231724Z AUTO 21003KT 10SM BKN020 BKN027 OVC032 08/06 A2973 RMK AO2 T00780061 TSNO \$

Kaltag (AK) 17:42 08/23/24 (UTC) 09:42 08/23/24 (AKDT)

FAA advisory weather product

CLEARDAY VISUAL REFERENCE

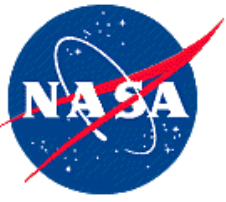
1400' MSL 4.5 SM
2200' MSL 8.0 SM
1200' MSL 3.5 SM

Site Elevation: 195' MSL

Show Camera Loop

 North (345°)	 NorthEast (40°)	 South (170°)	
------------------	---------------------	------------------	--

Weather Data | Weather Trends | PIREPs | RCO | Airport Info | NOTAMs (PilotWeb)



23 August 2024/DOY 236 SW Alaska & Yukon Delta



Takotna (PPCT) UTC:17:43 Local:09:43

Takotna (1) 17:38 08/22/24 (UTC) 09:38 08/22/24 (AKDT)

CLEARDAY VISUAL REFERENCE

800' MSL
5.0 SM

End of Runway
Less than 1.0 SM

Site Elevation: 427' MSL

FAA advisory weather product

Show Camera Loop

East (70°)	SouthEast (115°)	SouthWest (210°)	
------------	------------------	------------------	--

Weather Data | Weather Trends | PIREPs | RCO | Airport Info | NOTAMs (PilotWeb)



23 August 2024/DOY 236 SW Alaska & Yukon Delta



McGrath (PAMC) UTC:17:43 Local:09:43

METAR PAMC 231702Z 22007KT 10SM FEW008 SCT020 OVC065 09/07 A2982 RMK AO2 T00890067 \$

Mc McGrath (E) 17:43 08/23/24 (UTC) 09:43 08/23/24 (AKDT)

CLEARDAY VISUAL REFERENCE

Hills 800' MSL 2.5 SM

Site Elevation: 332' MSL

FAA advisory weather product

Show Camera Loop

East (84°)	South (189°)	West (268°)	NorthWest (322°)

Weather Data | Weather Trends | PIREPs | RCO | Airport Info | NOTAMs (PilotWeb)



23 August 2024/DOY 236 SW Alaska & Yukon Delta



Minchumina (PAMH) UTC:17:43 Local:09:43

METAR PAMH 231735Z AUTO 22005KT 10SM -RA SCT006 OVC045 08/07 A2979 RMK AO2 TSNO PNO \$

Minchumina (NE) 17:39 08/23/24 (UTC) 09:39 08/23/24 (AKDT)

CLEARDAY VISUAL REFERENCE

1500' MSL
7.5 SM
Shore
5.0 SM

Site Elevation: 698' MSL

FAA advisory weather product

Show Camera Loop

NorthEast (60°)	SouthEast (147°)	SouthWest (205°)	West (250°)

Weather Data | Weather Trends | PIREPs | RCO | Airport Info | NOTAMS (PilotWeb)